

Piece: *Up in the mouth*

TECH RIDER

- **Italian Stage:** minimum 12m (front) x 12m (depth)
- **Black box:** legs, depending on the theater architecture.
- **Linolium:** black and light grey
- **Bars:** 05 for lights.
- **Bars:** 02 for Scenery
- **Tape Linolium:** black and light grey
- **Marley floor:** light grey linolium and black carpet. **IMPORTANT: foam layer underneath the marleyfloor (to protect bodies from impact) provided by the presenter. Description: spumapack (between 6mm and 7mm thick)**

LIGHTS: COMPLETE REFLECTORS

REFLECTORS	TYPE	UNITS
ELIPSOIDAL/ PROFIRE/ OU LYCOS	36°	6
FRESNEL	FRESNEL 1000 WATTS - with bamdoor	12
PAR 64 (Europe)/ NSP – CP 61	PAR 64 (Europe)/ NSP – CP 61 1000 WATTS	64
LIGHTING PROFESSIONAL TABLE	ETC Express 48/96 channels	01

SOUND:

	TYPE	UNITS
SOUND WORK DESK	Yamaha LS9	01
PA	JBL VRX 932	04
SUB	JBL VRX 918	02
MONITORES	JBL EON XT 515	04
MICS	SHOTGUN - SHURE - SM89 OU SHURE PZM 91 (to capture surround sound).	08
MDPLAYER	SONY MDS-JE530 (autopause)	01
CDJ	PIONEER 2000	01



OTHERS:

- **Set up time:** 8 hours (minimum).
- Time for dress rehearsal: 2 hours.
- Time for dismantling: 1 hour.

Tech team:

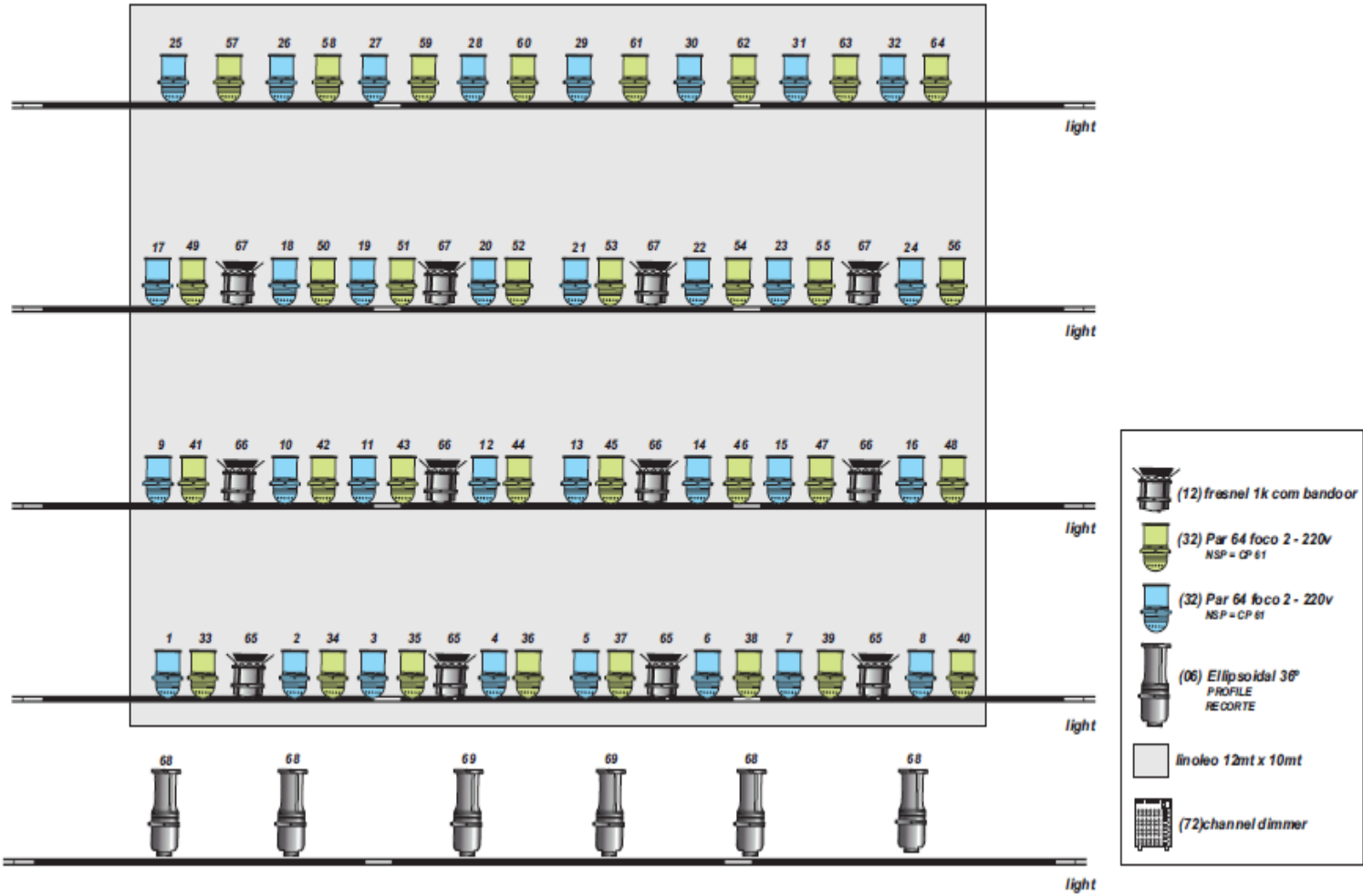
- Stage: 2 technicians (for set up) and 2 technicians to run the show
- Lights: 3 technicians
- Sound: 1 technician

BACK STAGE:

- Mirrors, chairs;
- **Washing and ironing service;**
- Back stage meal in the performance days: juice, cold sandwiches, fruits, chocolate etc. Three hours before performance. One vegetarian.

Quasar Cia. de Dança
"Céu na boca"

Lighting plan



- STAGE

Quasar Cia. de Dança
"Céu na boca"

MAPA DE PALCO

