

Tech rider

Piece: in the Singular

STAGE

- **Italian Stage:** minimum 11m (front) x 11m (depth)
- **Black box:** with side legs
- **Linolium:** black and light grey
- **Bars:** 06 bars for the lights + 01 bar for the scenery

LIGHTS: COMPLETE REFLECTORS

REFLECTORS	TYPE	UNITS
ELIPSOIDAL/ PROFIRE/ OU LYCOS	19º or 26º ETC	20
ELIPSOIDAL/ PROFIRE/ OU LYCOS	36º ETC	14
ELIPSOIDAL/ PROFIRE/ OU LYCOS	50º ETC:	20
FRESNEL	FRESNEL 1000 WATTS (1k)- with bamdoor	18
PAR 64 (Europe)/MFL – CP 62	PAR 64 (Europe)/MFL – CP 62 1000WATTS	10
LIGHTING PROFESSIONAL TABLE	ETC Express 48/96 channels	01

SOUND:

	TYPE	UNITS
SOUND WORK DESK	Yamaha LS9	01
PA	JBL VRX 932	04
SUB	JBL VRX 918	02
MONITORES	JBL EON XT 515	04
MICS	suround sound professional	04
MICS	wireless mics	04
MDPLAYER	SONY MDS-JE530 (autopause)	01
CDJ	PIONEER 2000	01

OTHERS:

- **Set up time:** 12 hours (minimum).
- **Tech team:**
 - Stage: 2 technicians (for set up) and 2 technicians to run the show
 - Lights: 3 technicians
 - Sound: 1 technician

CARGO DESCRIPTION (Scenery)

Foam: 8 volumes (70cm X 52cm). Weight per unit: 5kg. Total: 40kg
(it goes underneath the linoleum)

Black back drop props:

- black curtain : 8 m X 10 m
- Small platinum pieces. 1 volume - 80cm (high) x 54cm (length) x 30cm (depth). Total: 14kg

CARGO DESCRIPTION (Costume)

Luggage: 6 volumes. Total: 135Kg
- 2 costumes assistants (ironing is required)

BACK STAGE:

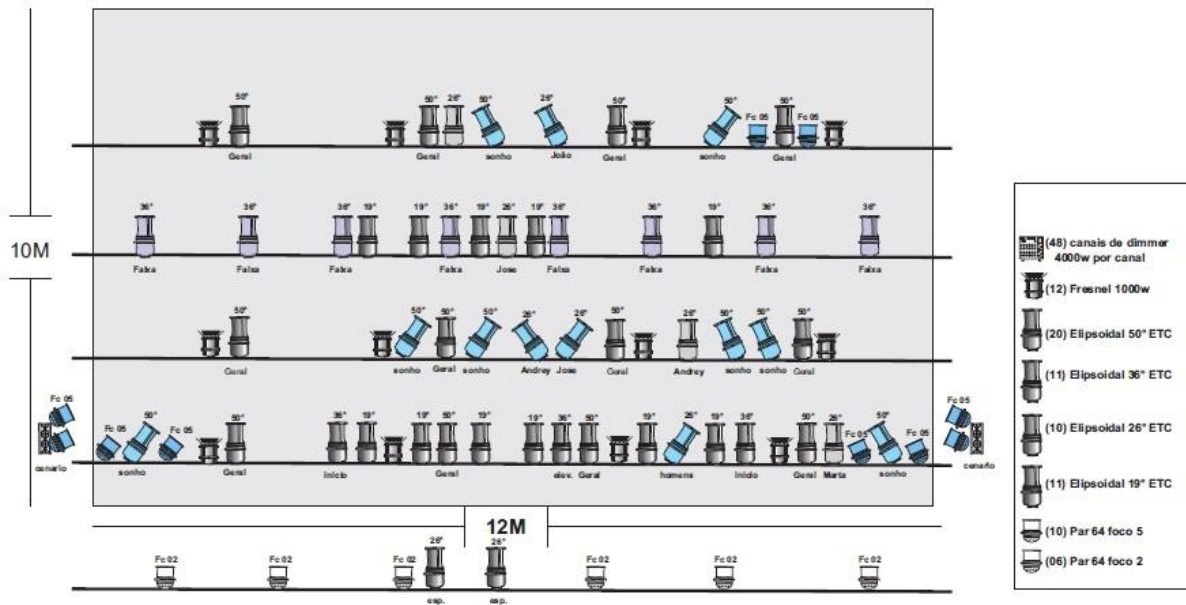
- Mirrors, chairs;
- **Washing and ironing service;**
- Back stage meal in the performance days: juice, cold sandwiches, fruits, chocolate etc. Three hours before performance. One vegetarian.

• LIGHTING PLAN

NO SINGULAR

QUASAR CIA DE DANÇA

MAPA DE LUZ



MAPA DE PALCO

