

PERFORMANCE: MY BODY DOESN'T TIRE FROM THIS

TECHNICAL REQUIREMENTS

- **Italian Stage:** Ideally a 12m apron x 10m depth (adaptable);
- **Linoleum flooring:** Grey 12m x 10 m.
- **Black box:** Open box; with a blue translucent voile curtain 8m high around the entire box.
- **Set and lighting poles:** 06 (six) per light and 04 (four) per backdrop in front of the back screen, see map below;
- **Tapes:** Grey Gaffer tape.

Lighting Equipment:

Observation: All reflector spotlights should be complete (shutters, filaments, brackets, plugs).

ITEM	DESCRIPTION	QTY
Moving Light		04
Ellipsoidal	26° ETC	11
Ellipsoidal	50° ETC	20
Fresnel	1K	16
PAR (LED)		40
Lighting table	ETC Express 48/96 channels	01

Sound Equipment:

Observation: All equipment should be turned on LR. Feedback/Return should also be on LR.

ITEM	DESCRIPTION	QTY
Soundboard	Yamaha LS9	01
PA	JBL VRX 932	04 speakers per side
SUB	JBL VRX 918	02 speakers per side
Return/Feedback	JBL EON XT 515	04 speakers per side
Microphone (voice)	Wireless - SHURE BETA 87 A	04
Microphone	SHOTGUN - SHURE - SM89 OU SHURE PZM 91	06
Cabling for Electric Guitar	To be played live	
CDJ	PIONEER 2000	01
Pedestals	For microphones (06 for Shotgun mics and 02 for voice mics)	08



Assembly time: 12 hours.

Dress rehearsal time: 2 hours.

Disassembly time: 2 hours.

Theater/event staff:

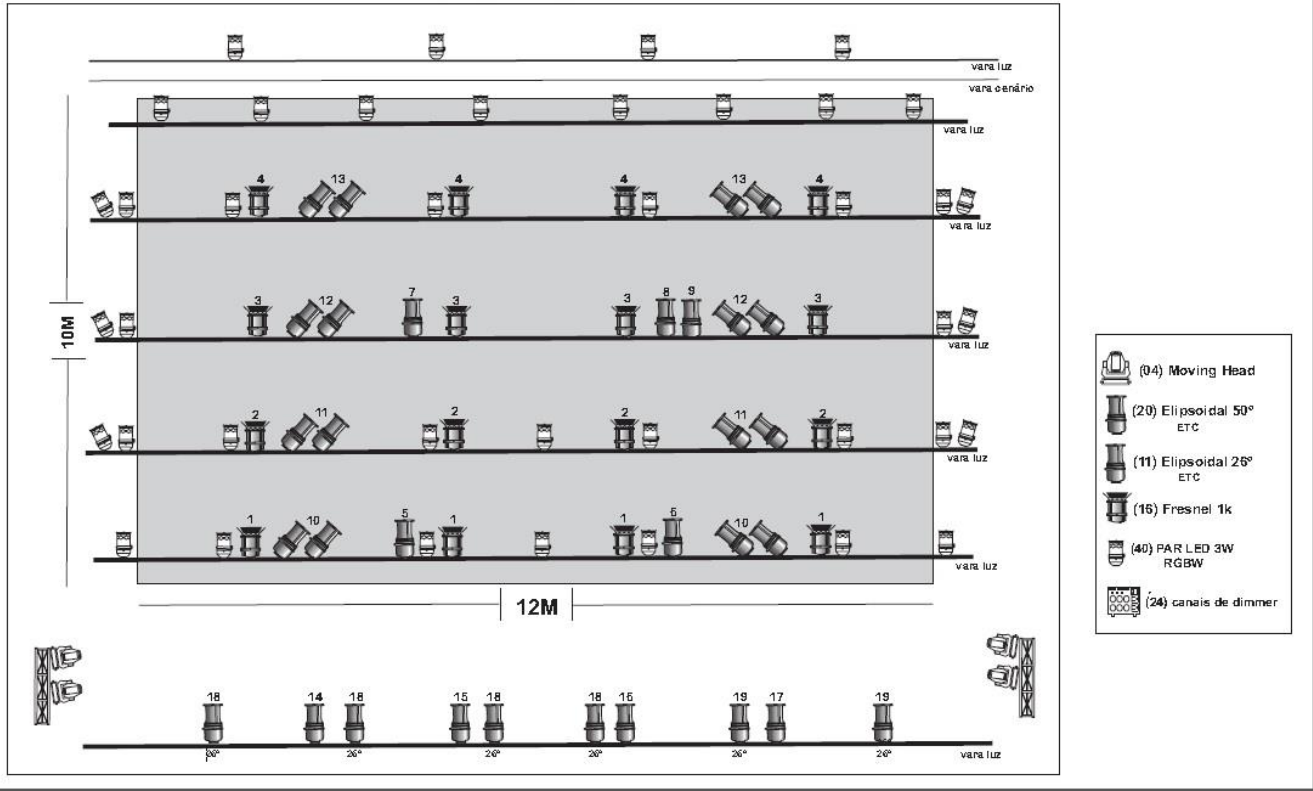
- 2 stagehands for assembly & disassembly;
- 2 charge artists;
- 1 lighting technician & 2 lighting assistants for assembly;
- 1 engineer (or electrician?);
- 1 sound technician.

- **Stage Lighting Plan:**

Quasar cia de dança

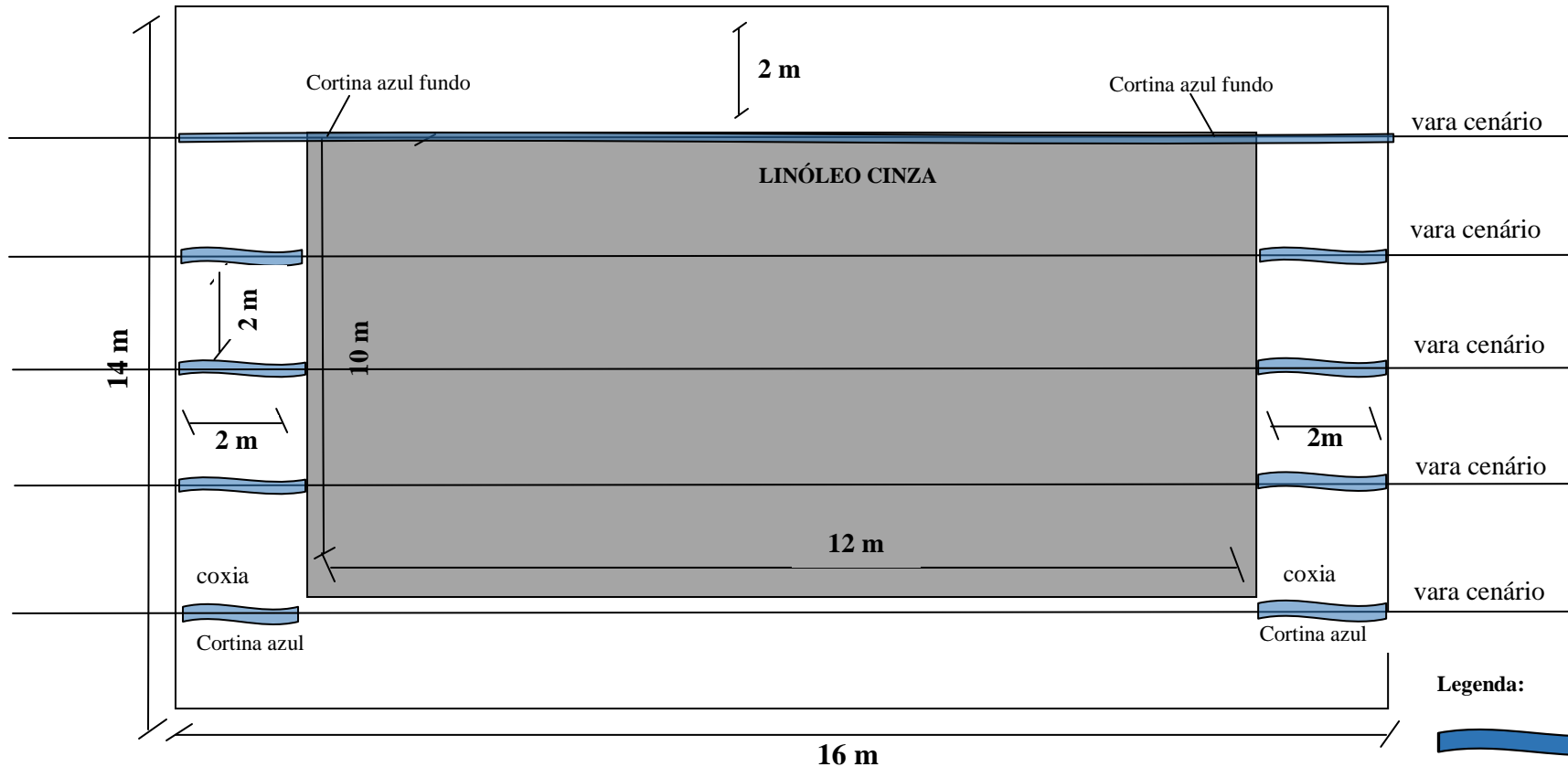
Sobre isto, meu corpo não cansa

MAPA DE LUZ





Floor plan:

Mapa de Palco



Legenda:

-  Cortina* azul fundo
- 12m x 10m Linóleo cinza
-  Coxia (fixadas cortinas* azul)

*As Cortinas são de voil azul translúcida

Obs.: Podendo sofrer adaptações